



FEED 'n WEED

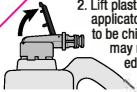
HOW TO USE: DO NOT apply under windy conditions or if rain is expected within 12 hours. **DO NOT** apply to lawns suffering from stress. **DO NOT** mow or fertilise for 7 days after applying and avoid watering for 12 hours after application. **DO NOT** drench around the roots of wanted plants.

SITUATION: Lawns and Turf (except Buffalo and Durban Grass).	WEEDS CONTROLLED: Bindii (Jo-Jo), Capeweed, Catsear, Clover, Dandelion, Dock, Lambs Tongue, Plantains, Thistles.	RATE: Apply the contents of this pack over (2L)130 square metres
--	--	--

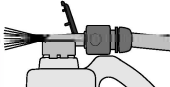
NOT TO BE USED FOR ANY PURPOSE OR IN ANY MANNER CONTRARY TO THIS LABEL UNLESS AUTHORISED.

HOW TO PREPARE

1. Shake pack well before using.
2. Lift plastic flap in front of applicator. This is designed to be child resistant so you may need to use a flat edge to lever up.



3. Connect hose on applicator. You will need to click on.



4. Turn on the tap using mid to high water pressure.

The water will mix with the contents in the correct ratio.

5. Walk and spray at a steady pace, while sweeping the arc back and forth. Overlap treated areas slightly. Keep bottle upright — do not spray at the ground.
6. USE CAUTION WHEN APPLYING NEAR GARDEN BEDS AND SHRUBS.
7. When the area is treated turn water off. Close plastic flap to prevent spillage when not in use. Always store product upright.

HOW TO APPLY: Measure lawn area before application. Apply when weeds are growing actively. Spray directly on weeds and lawns until foliage is quite wet. Weeds will die slowly. Effects may take up to 3 weeks to appear.

CAUTION: DO NOT allow spray to contact or drift onto plants you do not want killed. **DO NOT** allow chemical containers or spray to get into drains, streams or ponds. **DO NOT** spray directly on humans, pets or food preparation areas. **DO NOT** use on Lippia, Dichondra, Durban Grass, Clover lawns and lawns less than 3 months old or instant lawns until 6 weeks after laying. **DO NOT USE ON BUFFALO LAWNS.** May cause temporary injury to Kikuyu lawns. **DO NOT** feed treated grass clippings to pets, poultry, livestock or use to mulch plants. Dangerous to fish. **DO NOT** contaminate water for garden or domestic supplies. **DO NOT** use this container for any other purpose.

STORAGE AND DISPOSAL: Store in the closed, original container in a cool, dry place out of the reach of children. **DO NOT** store in direct sunlight. Dispose of empty container by wrapping in paper, placing in plastic bag and putting in garbage.

SAFETY DIRECTIONS: Will irritate the eyes, nose, throat and skin. Avoid contact with eyes and skin. **DO NOT** inhale spray mist. If product contacts skin, immediately wash with soap and water. If product in eyes, wash it out immediately with water. After use and before eating, drinking or smoking wash hands, arms and face thoroughly with soap and water.

FIRST AID: If poisoning occurs, contact a doctor or Poisons Information Centre on 131 126.

LIABILITY: This product must be used strictly as directed. Brunnings will not be liable for any loss or damage arising from a failure to strictly follow the directions for use.

Analysis	%W/W
Nitrogen (N) as Nitrate	0.7
Nitrogen (N) as Urea	5.5
Total Nitrogen (N)	6.2
Total Potassium (K) as Nitrate	2.03
Iron (Fe) as Chelated Iron	0.03
This product contains 82% w/w water and 18% w/w solids. This product contains less than 1 ppm lead (Pb), 0.2ppm cadmium (Cd) and 0.02ppm mercury (Hg).	

Brunnings Garden Products D.O.M.
 3/19-23 Clarinda Road,
 Oakleigh South Vic 3167 Batch No
 Phone: (03) 9543 5600
 Go to www.brunnings.com.au
 APVMA Approval No. 60968/2L/0408



9 310522 020365
 Product Code: 20714 v.122